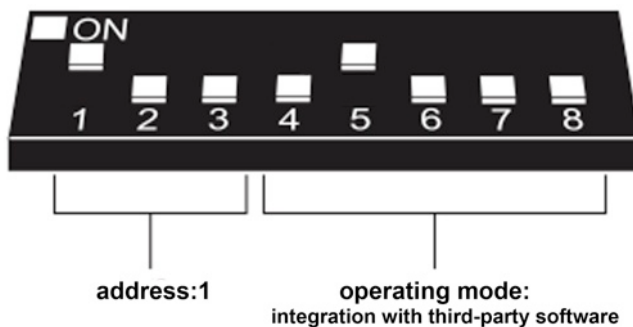


DOMIQ/Serial-2SI

DOMIQ/Serial-2SI was designed to integrate **SATEL Integra** alarm control systems with **DOMIQ/Base**. Module has built-in alarm control panel's communication protocol.

Module is designed to be installed in the installation closet on the 35mm DIN rail. Before installation on DIN rail please push lock on the bottom of the module. Due to the length of the standard ribbon cable, the module should be mounted on the right side of the **Base** module.

Connection between alarm control panel and **DOMIQ/Serial-2SI** requires **SATEL INT-RS** expander - RS-232 interface for systems integration. **INT-RS** module should be set to *integration with third-party software* operating mode by setting DIP-switch No. 5 to 1 (see picture below). First three switches are used for address setting on keypad bus. Typically the address is set to 1. **INT-RS** module will not operate correctly until the extender identification process is completed in the service mode of the **SATEL Integra** control panel.

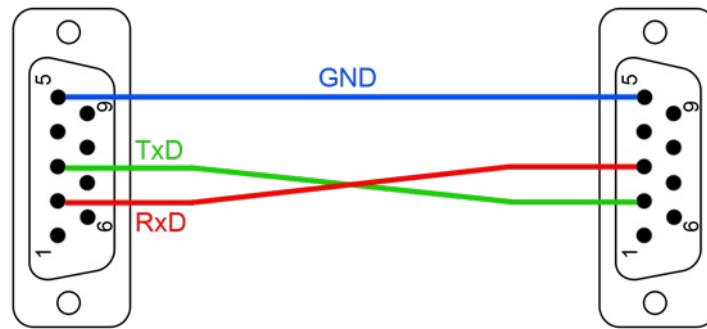


All inputs and outputs are read four times per second. Status of alarm zones is updated once every two seconds. Any change of alarm control panel state, such as control relays, alarm zones etc. takes about one second and requires entering the PIN code by user with authorization to perform desired action.

Connections

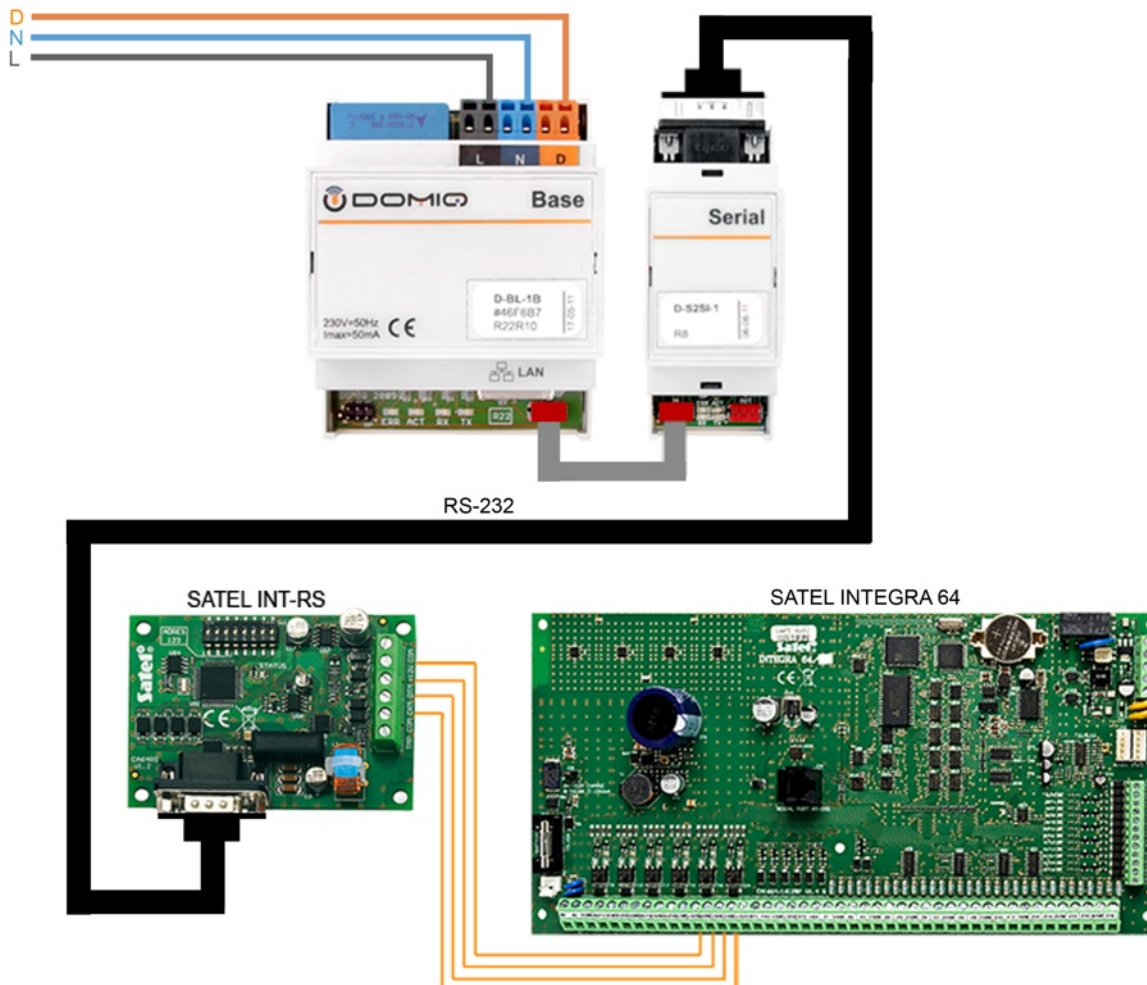
- **IN** connector - ribbon cable connecting module with **EXT** connector of the **Base** module or with **OUT** connector of the other **DOMIQ** extension module. Before connecting the **Base** module should be disconnected from the power.
- **DB-9** (male type, RS-232 port) - crossover serial cable with two female plugs (null modem type cable). You can use a standard cable or make the cable by yourself. Three wires are required: **GND** (Signal Ground), **TxD** (Transmit Data), **RxD** (Receive Data).





View from solder side

This wiring diagram shows only simplified connection of devices. SATEL devices must be connected according to the relevant manufacturer's instructions.



Signaling

On the lower part of the module set of 4 LEDs is installed: **ACT** (blue), **ERR** (red), **TX** (yellow), **RX** (green). Correct module operating is indicated by quick blinking of the **ACT**.

During normal operation **TX** blinks when data is transmitted to the INT-RS. **RX** blinks when data is correctly received. Correct communication on MODBUS can be identified by alternating blinking of **RX** and **TX**.

Communication errors are indicated by **ERR** blinks.